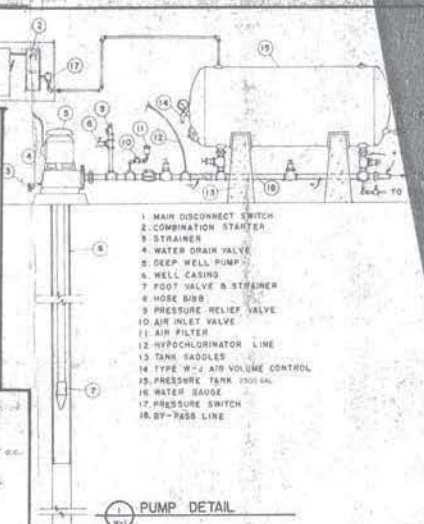
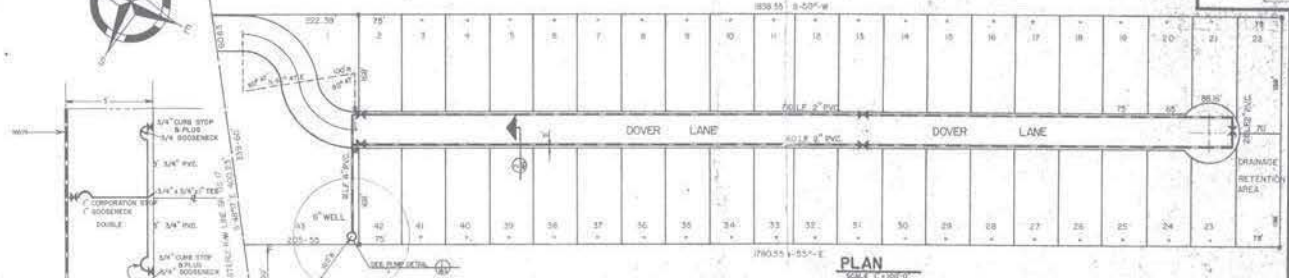


DOVER SUBDIVISION

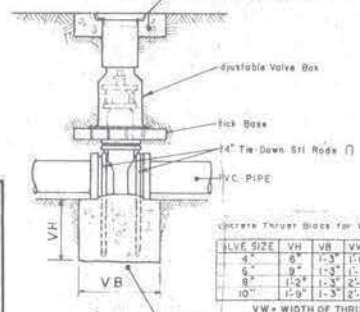
SECTION 38 TOWNSHIP 16 SOUTH, RANGE 30 EAST
VOLUSIA COUNTY, FLORIDA



- 1 MAIN DISCONNECT SWITCH
- 2 COMBINATION STARTER
- 3 STRAINER
- 4 WATER DRAIN VALVE
- 5 DEEP WELL PUMP
- 6 WELL CASING
- 7 FOOT VALVE & STRAINER
- 8 HOSE BIBB
- 9 PRESSURE RELIEF VALVE
- 10 AIR INLET VALVE
- 11 AIR FILTER
- 12 HYPOCHLORINATOR LINE
- 13 TANK SADDLES
- 14 TYPE W-2 AIR VOLUME CONTROL
- 15 PRESSURE TANK 1200 GAL
- 16 WATER GAUGE
- 17 PRESSURE SWITCH
- 18 BY-PASS LINE

TYPICAL SINGLE & DOUBLE SERVICES

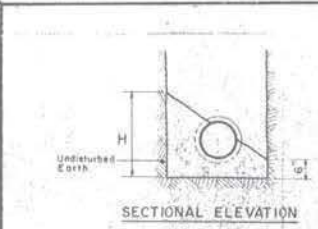
NOTE:
A MINIMUM 100 FOOT SEPARATION DISTANCE BETWEEN THE WELL AND ANY SANITARY SEWERS, SEPTIC TANKS AND SEWAGE OR WASTE WATER DISPOSAL AREAS SHALL BE MAINTAINED.



CONCRETE THRUST BLOCKS FOR VALVES

VALVE SIZE	VH	VB	VW
4"	8"	1-3"	11-0"
6"	9"	1-3"	12-8"
8"	11-2"	1-3"	2-0"
10"	11-0"	1-3"	2-0"

VW = WIDTH OF THRUST BLOCK

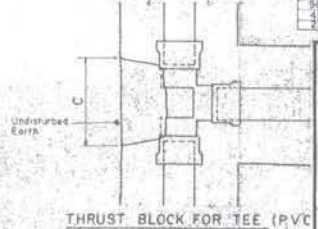


SECTIONAL ELEVATION

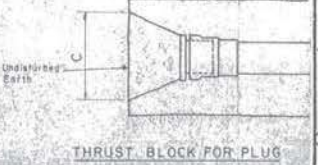
CONCRETE THRUST BLOCKS

FITTING	H	A	B	C
4" MAIN				
TEE OR PLUG	11-6"			9"
90° BEND		10"		6"
45° BEND				6"
22 1/2° BEND				N.R.
6" MAIN				
TEE OR PLUG	11-6"	11-0"		11-4"
90° BEND		31"		12"
45° BEND				11-0"
22 1/2° BEND				N.R.
8" MAIN				
TEE OR PLUG	11-6"			21-0"
90° BEND		35"		21-0"
45° BEND				21-0"
22 1/2° BEND				11-0"

N.R. = NOT REQUIRED

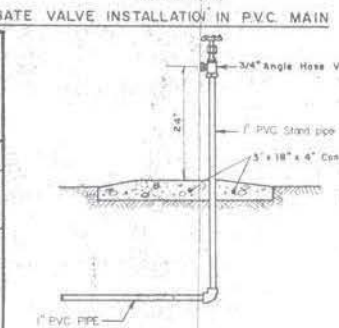


THRUST BLOCK FOR TEE (PVC)

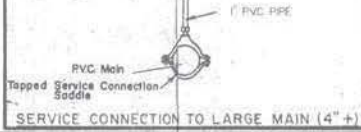


THRUST BLOCK FOR PLUG

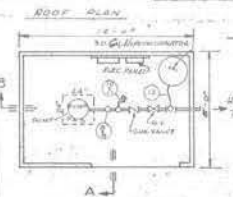
THRUST BLOCK FOR 90° (PVC)
THRUST BLOCK FOR 45° OR 22 1/2° BEND (PVC)



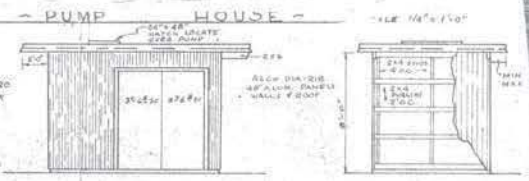
PUBLIC HOSE BIBB STANDPIPE



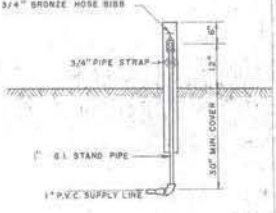
SERVICE CONNECTION TO LARGE MAIN (4" +)



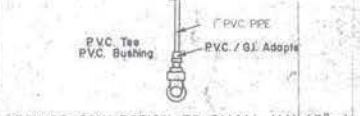
FLOOR PLAN



ELEVATIONS



INDIVIDUAL WATER AND ELEC. CONNECTIONS



SERVICE CONNECTION TO SMALL MAIN (3" -)



POST OFFICE BOX 2176 LABELAND, FLORIDA 32050

PROJECT NO.	DATE	SCALE	SHEET
P-7105	JUN 72	AS SHOWN	W-1

Diagrams S/D