





# CHROMIUM LEVELS DAYTONA PARK ESTATES



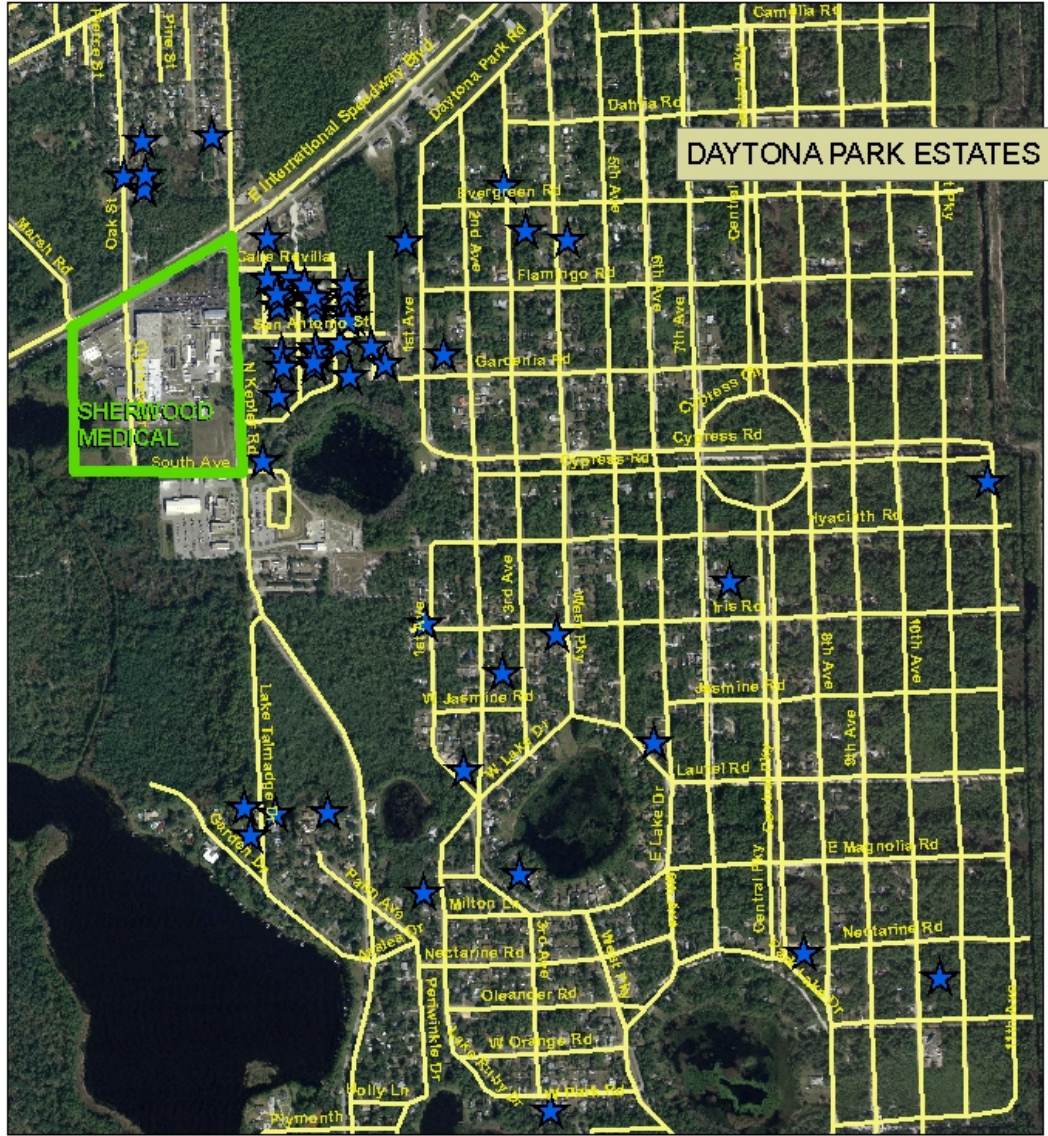
## Private Wells Tested

### LEGEND

-  Above Drinking Water Standard ( 0.1 mg/L )
-  1/2 Drinking Water Standard to Drinking Water Standard ( >0.05 mg/L )
-  Less than 1/2 Drinking Water Standard ( < 0.05 mg/L )
-  Not Detected



Disclaimer  
This product is for reference purposes only and is not to be considered as a legal document. Any reliance on the information contained herein is at the user's own risk. The Florida Department of Health and its agents assume no responsibility for any use of the information contained herein or any loss resulting therefrom.



0 150 300 600 900 Meters