



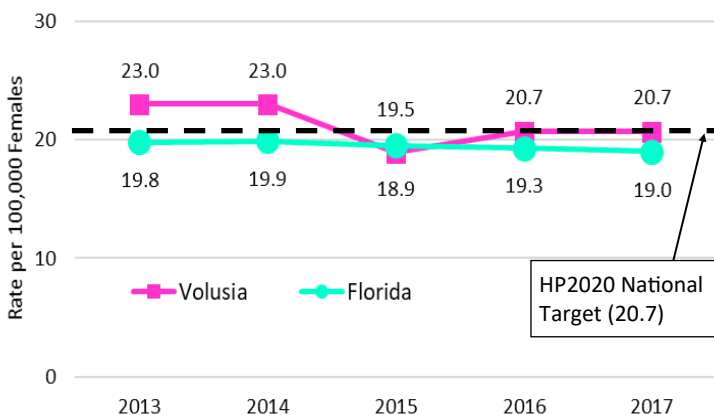
# PUBLIC HEALTH DATA BRIEF



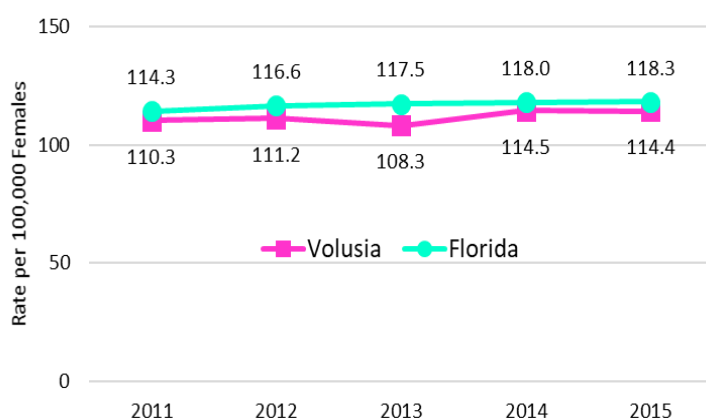
## BREAST CANCER IN VOLUSIA COUNTY

The most common form of cancer in women is breast cancer, according to the Centers for Disease Control and Prevention (CDC). Nationally, about 237,000 women and 2,100 men are diagnosed with breast cancer each year. Approximately, 41,000 women and 450 men die annually from breast cancer in the U.S., reported CDC. Healthy People 2020 (HP2020) has set an age-adjusted rate of 20.7 breast cancer deaths per 100,000 females as the national target. The U.S. age-adjusted breast cancer death rate was 20.1 in 2016. Florida's rate was slightly lower with 19 deaths per 100,000 females. Volusia County's breast cancer death rate matched the HP2020 target at 20.7 per 100,000 females in 2017.

**Breast Cancer Age-adjusted Death Rates  
Volusia County and Florida, 2013-2017**



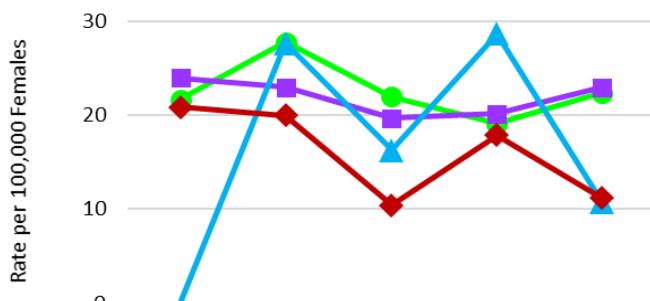
**Breast Cancer Age-adjusted Incidence Rates  
Volusia County and Florida, 2011-2015**



- ↑ Breast cancer age-adjusted death rates among females in Volusia County decreased by 10 percent from 2013 to 2017.
- ↑ Volusia County's breast cancer death rate equaled or was lower than the HP2020 target in three of the five year period.

- ↑ The age-adjusted incidence (newly diagnosed cases) rate of breast cancer in Volusia County rose by four percent from 2011 to 2015
- ↑ Volusia County's incidence rate was consistently lower than Florida's rate from 2011 to 2015.

**Breast Cancer Age-adjusted Death Rates by Race/Ethnicity, Volusia County, 2013-2017**

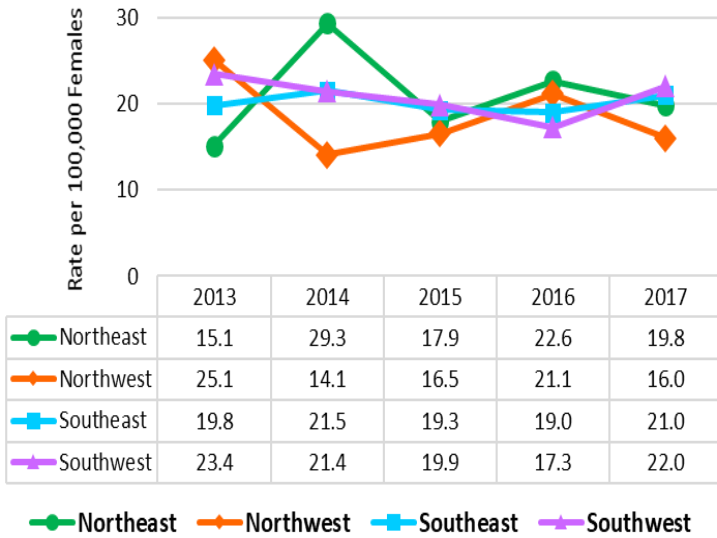


- ← The breast cancer death rate for black women rose by three percent, while the rate for white women decreased by four percent from 2013 to 2017.
- ← Breast cancer death rates decreased the most (46.4%) for Hispanic women from 2013 to 2017.

**NOTE:** Age-adjusting: The frequency with which health events occur is almost always related to age. The age-adjusted rate eliminates the effect of the underlying age distribution of the population, allowing for comparisons between populations regardless of their age structure.

Race/Ethnicity	2013	2014	2015	2016	2017
Non-Hispanic Black	21.7	27.8	22.0	19.1	22.4
Non-Hispanic White	24.0	23.0	19.7	20.2	23.0
Non-Hispanic Other	0.0	27.7	16.3	28.7	10.7
Hispanic	20.9	20.0	10.4	17.9	11.2

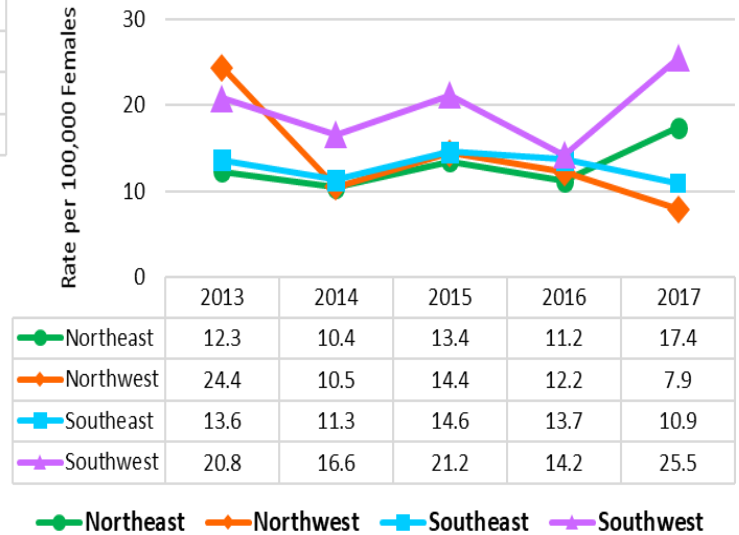
**Breast Cancer Age-adjusted Death Rates by Quadrant, Volusia County, 2013-2017**



↑ The western quadrants had decreases in breast cancer deaths from 2013 to 2017 with the northwest quadrant having the largest decrease (36.3%) in deaths due to breast cancer.

↓ Hospitalization rates due to breast cancer increased for the northeast and southwest quadrants by 42 and 23 percent respectively, while decreasing for the northwest and southeast quadrants by 68 and 20 percent respectively from 2013 to 2017.

**Breast Cancer Hospitalization Age-adjusted Rates by Quadrant, Volusia County, 2013-2017**



← While white women represented 74 percent of Volusia’s female population, they were a greater percent of deaths (86.5%) and hospitalizations (78.9%) due to breast cancer from 2013 to 2017.

← Other and Hispanic women had higher percentages of hospitalizations due to breast cancer compared to their percentage of the population in 2017.

**Sources:**

Agency for Health Care Administration, ED and Hospitalization datasets, 2013-2017; CDC; Florida Community Health Assessment Resource Tool Set, www.FLHealthCHARTS.com; Florida Department of Health, Bureau of Vital Statistics, 2013-2017; Healthy People 2020

**Percentage of Breast Cancer Hospitalizations and Deaths by Race/Ethnicity, Volusia County, 2013-2017**

Race/Ethnicity	Measure	2013	2014	2015	2016	2017
Black Women	% Population	10.5%	10.5%	10.5%	10.5%	10.5%
	% Hospitalizations	15.5%	11.1%	7.7%	6.5%	9.8%
	% Deaths	5.3%	7.1%	7.3%	5.5%	8.1%
White Women	% Population	74.4%	74.3%	73.8%	73.3%	72.8%
	% Hospitalizations	78.9%	80.0%	84.6%	84.8%	68.9%
	% Deaths	88.3%	84.7%	86.6%	86.8%	86.0%
Other Women	% Population	3.4%	3.5%	3.6%	3.7%	3.8%
	% Hospitalizations	0.0%	0.0%	1.9%	2.2%	4.9%
	% Deaths	0.0%	2.0%	2.4%	2.2%	1.2%
Hispanic Women	% Population	11.7%	11.7%	12.1%	12.4%	12.9%
	% Hospitalizations	5.6%	8.9%	5.8%	6.5%	16.4%
	% Deaths	6.4%	6.1%	3.7%	5.5%	4.7%

For more information, contact the Florida Department of Health in Volusia County Office of Planning & Performance Management at 386 274-0500 Ext. 0582 or visit our website, [www.volusiahealth.com/stats](http://www.volusiahealth.com/stats)

